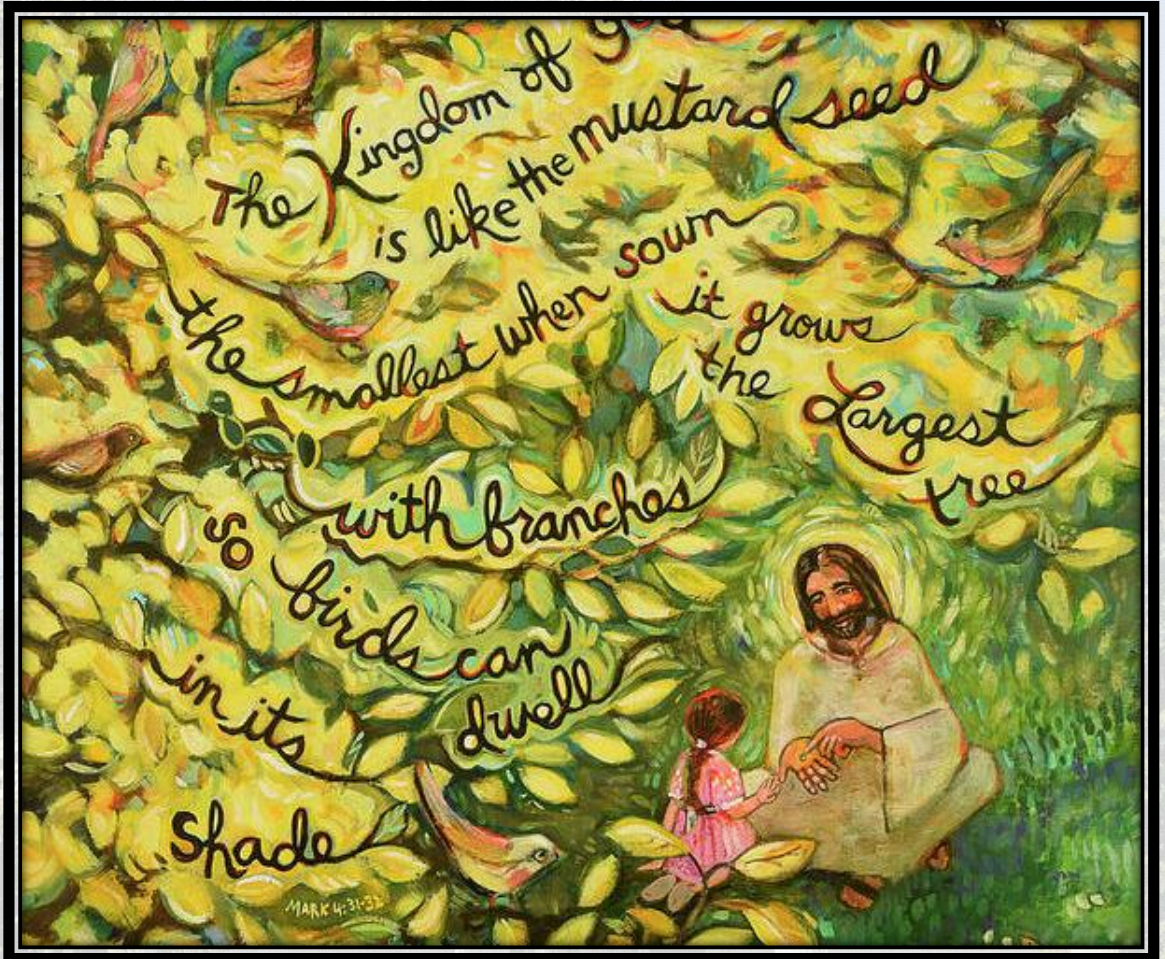


# The Mount Carmel Congregational Church

*A United Church of Christ*



*The Mustard Seed, Jen Norton (Acrylic on Wood)*

**First Sunday in Lent  
March 9<sup>th</sup>, 2025**

Prelude

“SUO GAN”  
*Arr. Thomas Quigley*

Valerie Duffy,  
Flute

## Greeting and Announcements

## Passing of the Peace of Christ

### Call to Worship

One: We are on a Lenten journey.

All: **It is a journey we take together, and a journey each one makes alone.**

One: We will spend the days to come focusing our hearts on God’s call on our lives.

All: **We carry little with us what is in our hearts: hope, trust, fear, apprehension, wonder, sorrow.**

One: On this Lenten journey, we will rest and sing and pray and listen.

All: **We gather this morning to rest and sing and pray and listen.**

One: We are on a Lenten journey from life to death to life again.

All: **Let us continue this journey together.**

\*Hymn                    “As the Winter Days Grow Longer”                    [Page 4]

### Unison Prayer

*(Adapted from a prayer by Dietrich Bonhoeffer)*

***O God, we cannot do this alone.***

***Help us to concentrate our thoughts on you;***

***We feel the weight of the world, and you offer rest;***

***We are lonely, yet you do not leave us;***

***We are feeble in heart, and you call us to courage;***

***We are restless, and you foment patience in our heats;***

***We harbor bitterness, and you plant seeds of gratitude;***

***We give into despair, and you awaken hope.***

***Whatever these days may bring, we cannot do this alone.***

***We are your people, held in your hands; forgive us, we pray. Amen.***

**Scripture Reading:** Luke 13: 18-21 Bev Jurkiewicz

Jesus asked, "What is God's kingdom like? To what can I compare it? It's like a mustard seed that someone took and planted in a garden. It grew and developed into a tree and the birds in the sky nested in its branches." Again he said, "To what can I compare God's kingdom? It's like yeast, which a woman took and hid in a bushel of wheat flour until the yeast had worked its way through the whole."

## **Sermon**

**Hymn** "O Day of God Draw Near" NCH #611  
*[Please remain seated for this hymn.]*

## **The Joys and Concerns of the Parish Family**

*Altar flowers for this morning's service have been given by Debbie Wooley in celebration of the Lenten Season.*

Please remember the following persons in your prayers: Carol Fitzsimons; Cari Jansen; Robert Grande; Maria Coffin; Karl Paulette; Amos Hewitt; Rhonda Pruzinsky; and the family and friends of Sophia Burns.

## **Moments of Silent Prayer**

### **Pastoral Prayer**

### **The Lord's Prayer**

*Our Father, who art in heaven, hallowed be thy names. Thy kingdom come, thy will be done on earth as it is in heaven. Give us this day our daily bread. And forgive us our trespasses as we forgive those who trespass against us. And lead us not into temptation but deliver us from evil. For thine is the kingdom and the power and the glory forever. Amen.*

### **Call to Offering**

**Offertory**

“ST. MICHAEL”

*Arr. Paul Manz*

**\*The Doxology**

*(In Unison)*

*Praise God throughout these forty days;  
Praise Jesus Christ whom God did raise;  
Praise to the Spirit who imparts  
God’s grace and love into our hearts. Amen.*

**\*Unison Prayer of Dedication**

*God of all, we offer not only our money today, but also our lives.  
Help us to live simply, generously, faithfully, and courageously, that  
our lives may point others to you. Amen.*

**\*Hymn**

“Lead On, Eternal Sovereign”

NCH #573

**Benediction**

**Postlude**

“Voluntary on LANEASHIRE”

XX

*As a community of faith, gathered in Christ's love,  
we strive to support one another in hearing the Word,  
living the Word, and sharing the Word.*

---

**ANNOUNCEMENTS**

**Please join us after service today for our Souper Sunday luncheon!**

**Please join Shirts and Skirts on Tuesday, March 18<sup>th</sup> at 5:00pm for a special potluck Bingo Night! We hope to see you there!**

**\*Hymn**

**“As the Winter Days Grow Longer”**



1 As the win - ter days grow long - er, draw - ing short the hours of night;  
2 As the vines burst in - to blos - som, fra - grant in the morn - ing air,  
3 As we jour - ney through this sea - son, pil - grims through a thirst - y land,



as our ea - ger ex - pec - ta - tion waits for Eas - ter's dawn - ing light—  
lift - ing spir - its with their sweet - ness, lur - ing hearts to thank - ful prayer—  
quench us with your liv - ing pres - ence; guide us with your lov - ing hand.



yearn - ing peo - ple, here we gath - er, turn - ing watch - ful eyes to you:  
Lent - en peo - ple, here we gath - er, seek - ing lives re - fresh - ed from sin.  
Wan - d'ring peo - ple, here we gath - er, called to rest a - long our way.



God who bless - es earth with spring - time, shine with - in our world a - new!  
God who bless - es earth with spring - time, bloom with - in our hearts a - gain!  
God who bless - es earth with spring - time, grant us sab - bath joy this day!

---

**SUNDAY WORSHIP: A LOOK AHEAD**

*Please join every Sunday at 10am for service!*

**March 16<sup>th</sup>, 2025**

*Second Sunday of Lent*

**Scripture:** Genesis 15: 1-12, 17-18

Psalm 63: 1-8

1 Corinthians 10: 1-13

Luke 13: 31-35



## Saturdays Mornings in March

March 15<sup>th</sup>

March 22<sup>nd</sup>

March 29<sup>th</sup>

### **Time**

10:30am-12:00pm

### **Place**

Parish Hall Parlor

We look forward to seeing you there!



# GET INVOLVED



Looking to get involved? Here are some committees you can join:

## Deacons...



Nurture the spiritual life of congregation.

## Ushers...



Welcome, set up, and assist newcomers.

## Faith Formation...



Plans and supports faith education.

## Music Committee...



Oversees music quality and programs.

## Trustees...



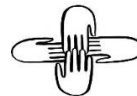
Manage finances, create annual budget.

## Altar Guild...



Arranges flowers, plan seasonal decor.

## Outreach Committee...



Organizes community and global missions.

## Investment Committee



Manages and reports on Church investments.

March 9<sup>th</sup>, 2025



**Mount Carmel Congregational Church**  
3284 Whitney Avenue, Hamden, CT 06518  
203-248-7408

Minister: Reverend Milton Brasher-Cunningham  
[Pastor@mccucc.com](mailto:Pastor@mccucc.com)

Office Admin: Mr. Aren Alberico  
[Office@mccucc.com](mailto:Office@mccucc.com)

Music Director: Mrs. Lynda Pedersen  
[lyndal.pedersen@gmail.com](mailto:lyndal.pedersen@gmail.com)

Faith Formation: Mrs. Debbie Wooley  
[ce@mccucc.com](mailto:ce@mccucc.com)

Treasurer: Mrs. Ellen Amato  
[treasurer@mccucc.com](mailto:treasurer@mccucc.com)

Social Media: <https://linktr.ee/mountcarmelchurch1>

Website: <https://www.mccucc.com/>

**Officers:**

President: Tom Duffy  
[thomascduffy67@gmail.com](mailto:thomascduffy67@gmail.com)

Clerk: Beverly Jurkiewicz  
[bevjjur@comcast.net](mailto:bevjjur@comcast.net)

Board of Deacons: Bev Jurkiewicz, Chair

Board of Trustees: Anna Anderson, Chair  
[aanderson545@gmail.com](mailto:aanderson545@gmail.com)